

HOUSING IN RECIDIVISM REDUCTION EFFORTS: *STUDY DESIGN*

Jacob T.N. Young

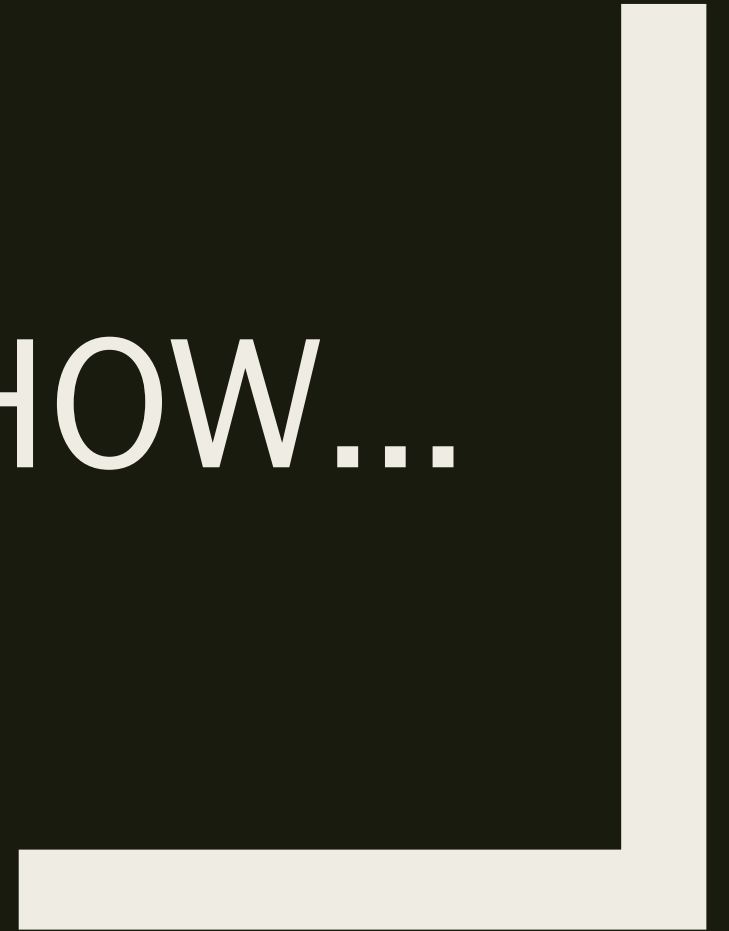
Associate Professor, School of Criminology & Criminal Justice
Associate Director, Center for Correctional Solutions
Watts College of Public Service and Community Solutions
Arizona State University

Jacob.Young.1@asu.edu



Arizona State University

WHAT, WHY, HOW...



What is the project about?

- Arizona Department of Housing will: Provide financial assistance (for up to 3 months) for housing to formerly incarcerated men.
 - *Does it reduce recidivism (i.e. returning to prison)?*
 - Does it impact housing stability? Employment?
- Conduct a Randomized Control Trial (RCT).
 - *One group receives the financial assistance (**treatment**) and one group does not (**comparison**).*
 - Does the provision of financial assistance make a difference?

Why is the project taking place?

- Why do the study?
 - *Formerly incarcerated persons experience homelessness and housing insecurity at rates substantially higher than the general population.*
- Why might we expect this to work?
 - *Research indicates that **Finding** and **Securing** housing is critical for ensuring successful re-entry.*
 - A “bundle of problems”: housing, employment, recidivism.
- Why do an RCT?
 - *An RCT is the “gold standard” for making a causal inference about the program.*
 - It is the best way to claim that any observed program effect is what actually caused observed changes.
 - *Did it work? Did it not work?*

How is the project taking place?

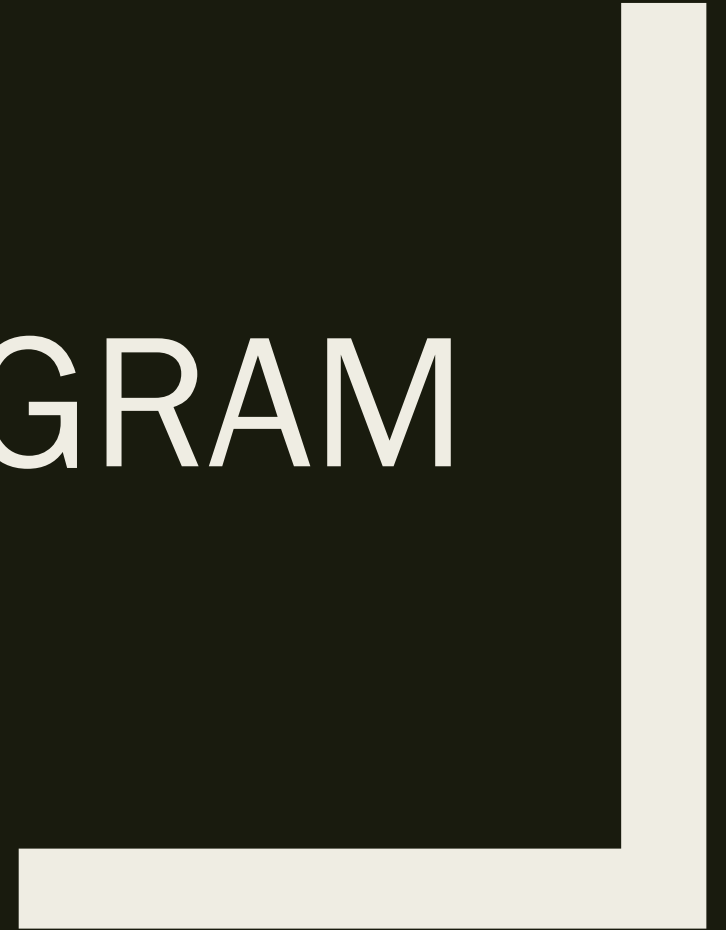
- A collaboration between multiple groups:
 - *Arizona Department of Corrections, Arizona Department of Housing, A New Leaf, Maricopa County Adult Probation, Community Corrections Bureau of ADC, & Arizona State University.*
- Site:
 - *Second Chance Center at Eagle Point Unit within the Arizona State Prison Complex at Lewis.*
 - Second Chance Center is a partnership between the ADC and the Arizona Department of Economic Security (DES).
 - *Correctional professionals and workforce specialists work with individuals to prepare them for release.*
 - *8 week program with weekly cohorts of roughly 20-35 individuals.*

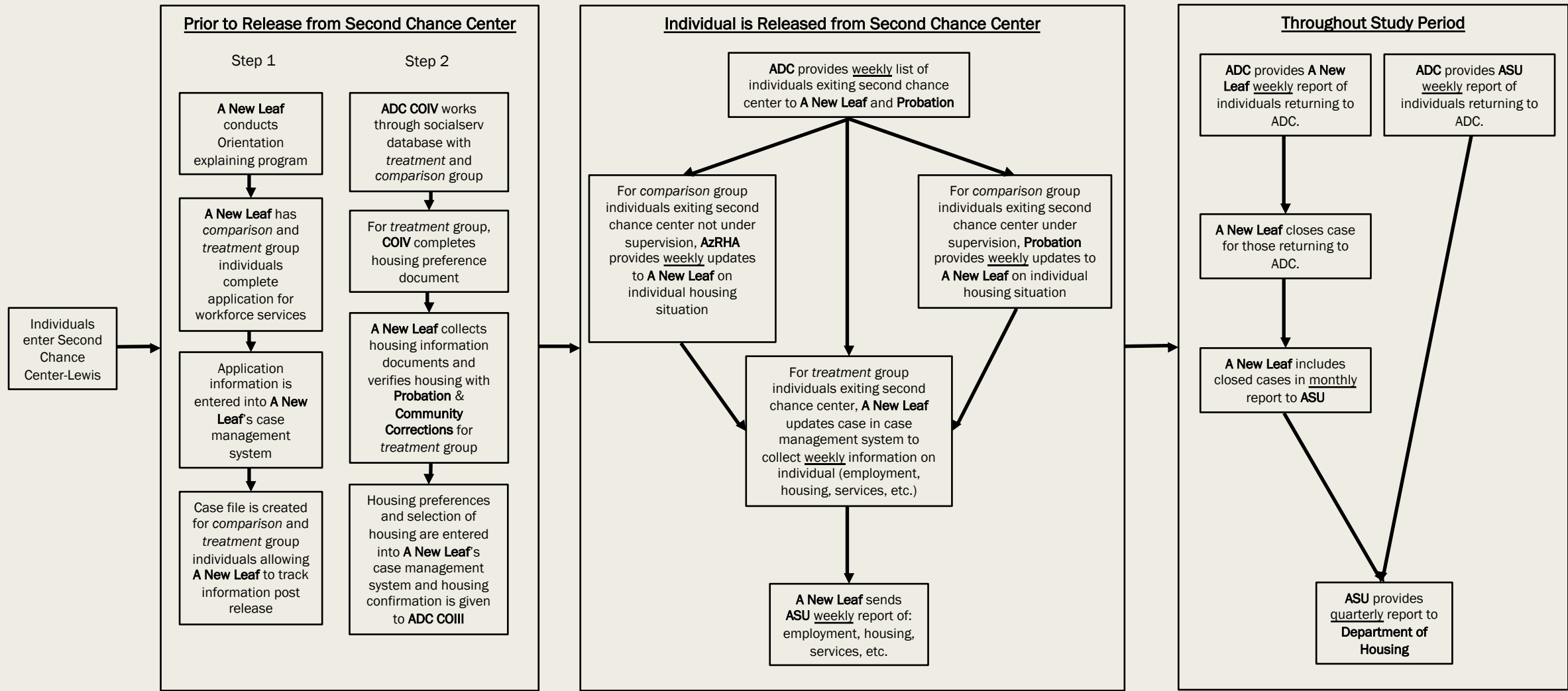
How is the project taking place?

- Randomization:
 - *Individuals will be randomly assigned to either a **treatment** group (receive financial assistance) or a **comparison** group (no financial assistance).*
 - What does this do? Equivalent groups and “confounding”.

- Addressing the **Finding** and **Securing** housing aspects:
 - ***ALL** individuals will go through a housing recommendation process using the socialserv database (via the Arizona Department of Housing).*
 - Best housing placement will be based on the needs of the individual (e.g. substance abuse, mental health) populated by the socialserv database.
 - *The **treatment** group will only (ideally) differ based on financial assistance.*

STUDY FLOW DIAGRAM





STUDY FLOW DIAGRAM

Stage 1



Prior to Release from Second Chance Center

Step 1

A New Leaf conducts Orientation explaining program

A New Leaf has *comparison* and *treatment* group individuals complete application for services

Application information is entered into A New Leaf's case management system

Case file is created for *comparison* and *treatment* group individuals allowing A New Leaf to track information post release

Step 2

ADC COIV works through socialserv database with *treatment* and *comparison* group

For *treatment* group, COIV completes housing preference document

A New Leaf collects housing information documents and verifies housing with Probation & Community Corrections for *treatment* group

Housing preferences and selection of housing are entered into A New Leaf's case management system and housing confirmation is given to ADC COIII

Individuals enter Second Chance Center-Lewis

Stage 2

STUDY FLOW DIAGRAM

Stage 2



Individual is Released from Second Chance Center

ADC provides weekly list of individuals exiting second chance center to **A New Leaf** and **Probation**

For *comparison* group individuals exiting Second Chance Center not under supervision, **AzRHA** provides weekly updates to **A New Leaf** on individual housing situation

For *comparison* group individuals exiting second chance center under supervision, **Probation** provides weekly updates to **A New Leaf** on individual housing situation

For *treatment* group individuals exiting second chance center, **A New Leaf** updates case in case management system to collect weekly information on individual (employment, housing, services, etc.)

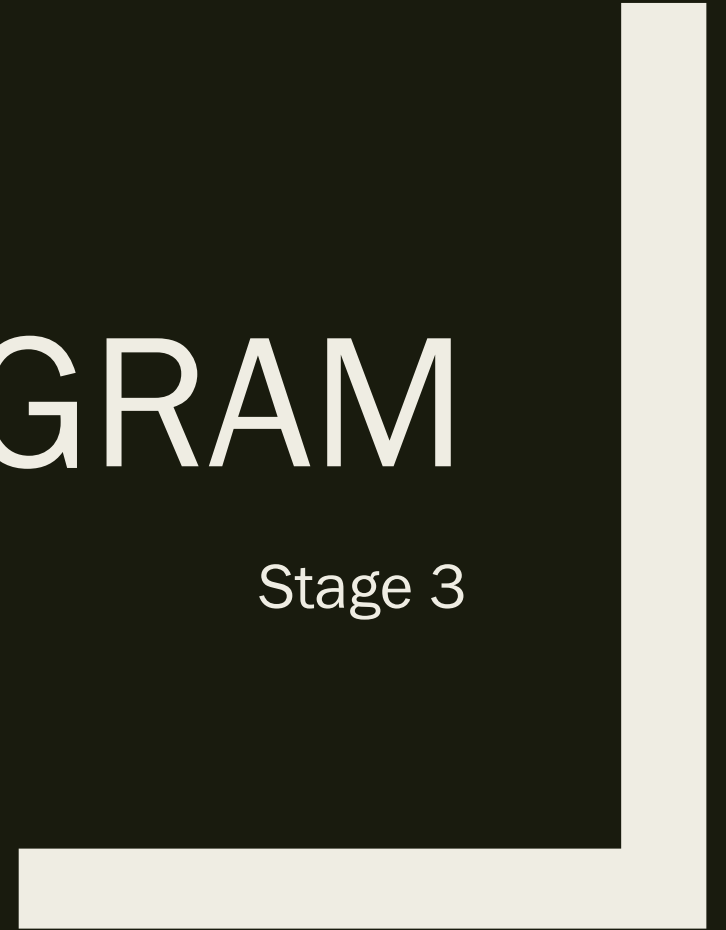
A New Leaf sends **ASU** weekly report of: employment, housing, services, etc.

Stage 1

Stage 3

STUDY FLOW DIAGRAM

Stage 3



Throughout Study Period

ADC provides **A New Leaf** weekly report of individuals returning to ADC.

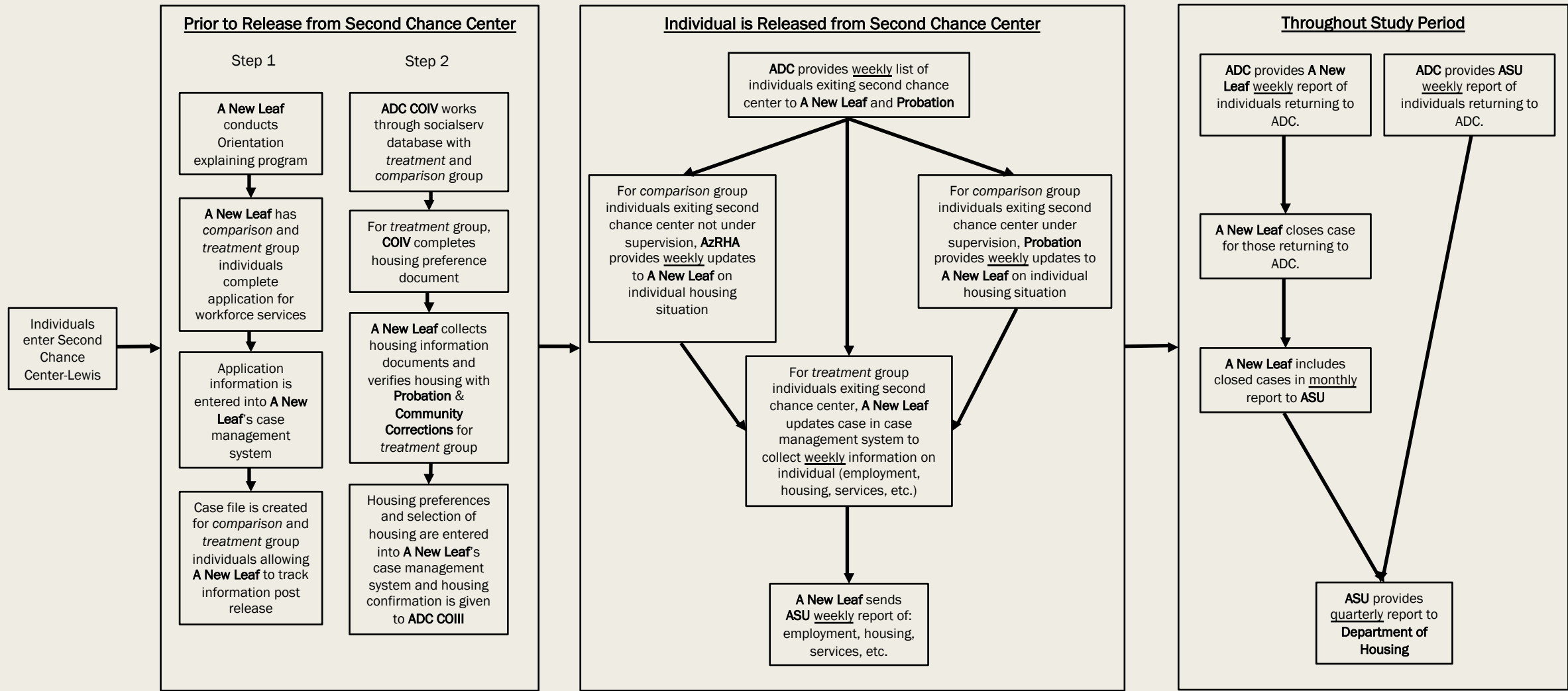
ADC provides **ASU** weekly report of individuals returning to ADC.

A New Leaf closes case for those returning to ADC.

A New Leaf includes closed cases in monthly report to **ASU**

ASU provides quarterly report to **Department of Housing**

Stage 2



ANALYSES

What type of questions can we ask?

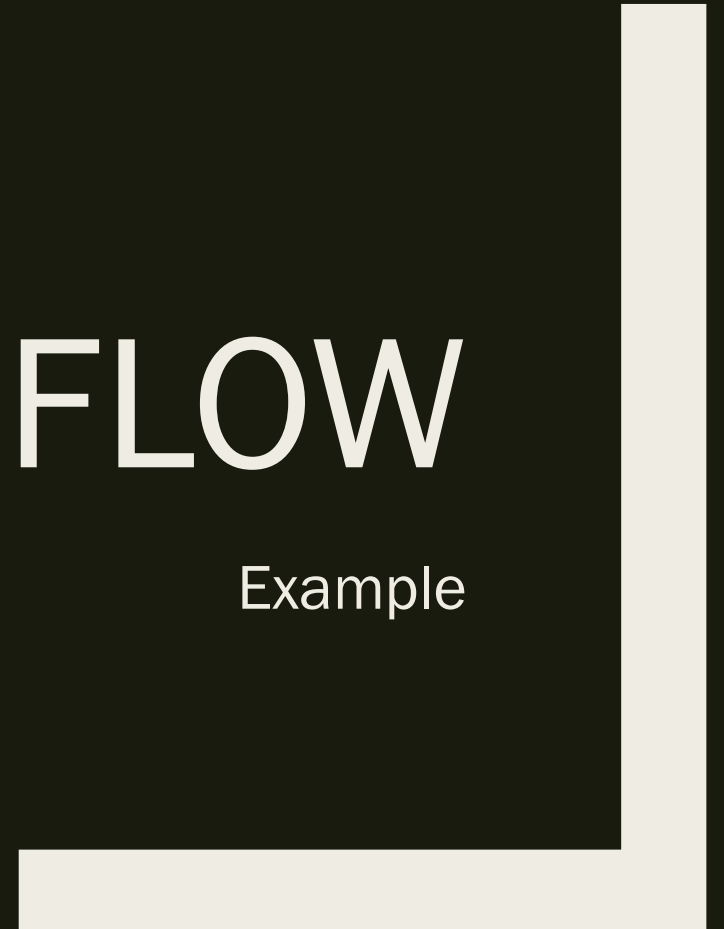


What are the analytic goals?

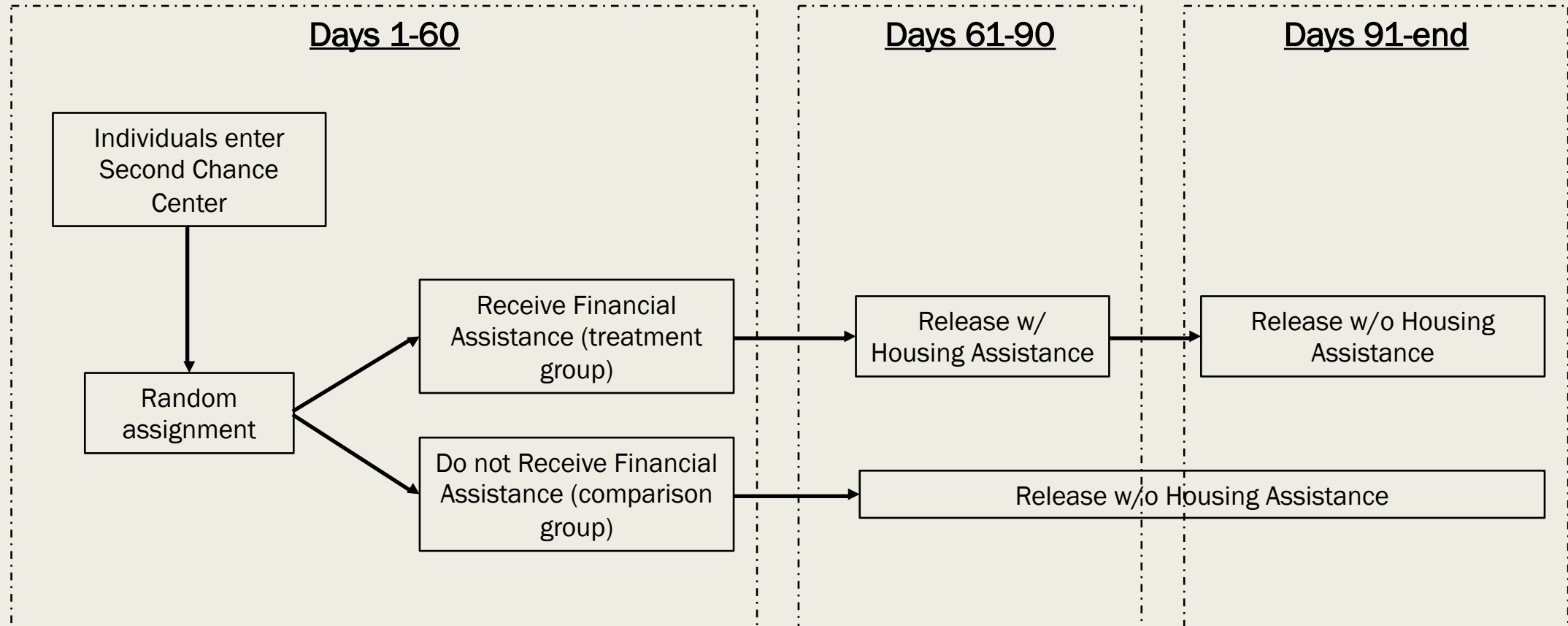
1. Determine if providing monetary assistance reduced **rearrest** and **reincarceration** for technical violations and new crimes.
2. Determine if providing monetary assistance influenced both **short-term housing stability** (while receiving monetary assistance) and **long-term housing stability** (after monetary assistance ends).
3. Determine if providing monetary assistance influenced **employment status, job type, and wages**.
4. Determine whether providing monetary assistance influenced **employment and housing stability**, which later influenced **recidivism**.

COHORT FLOW

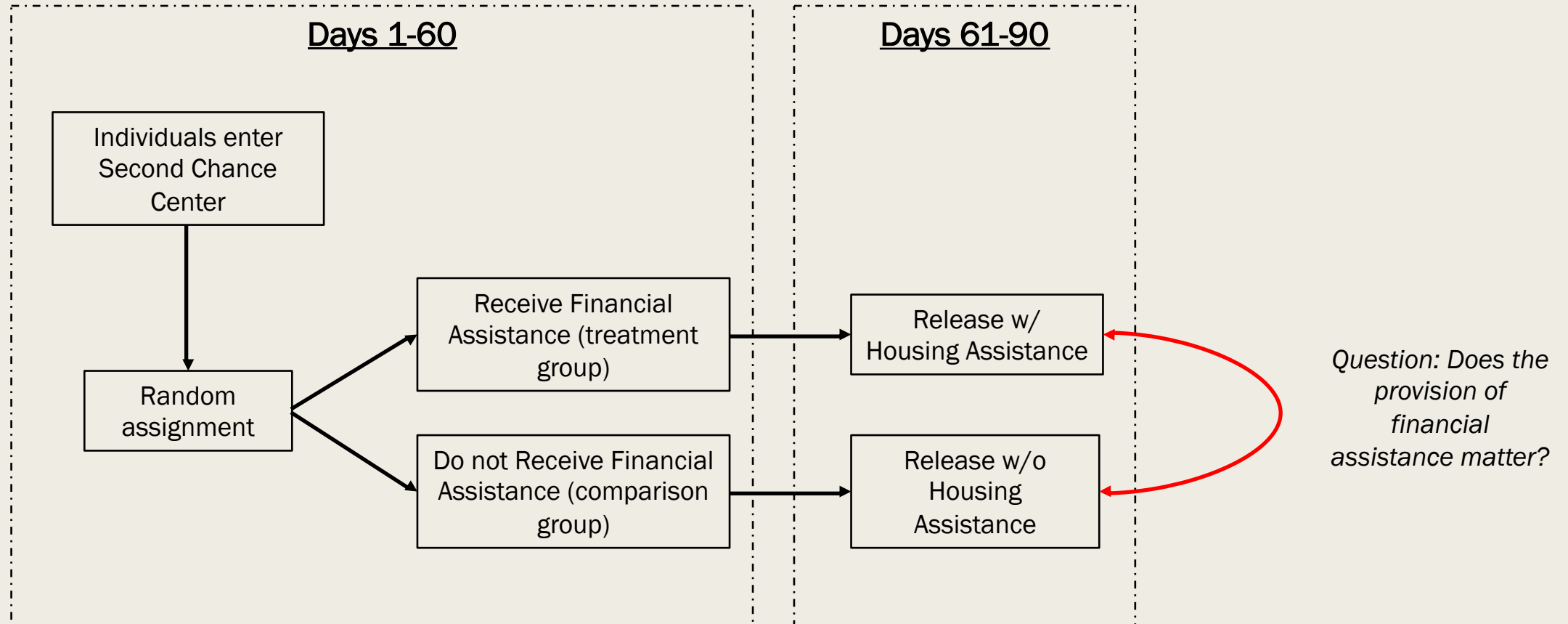
Example



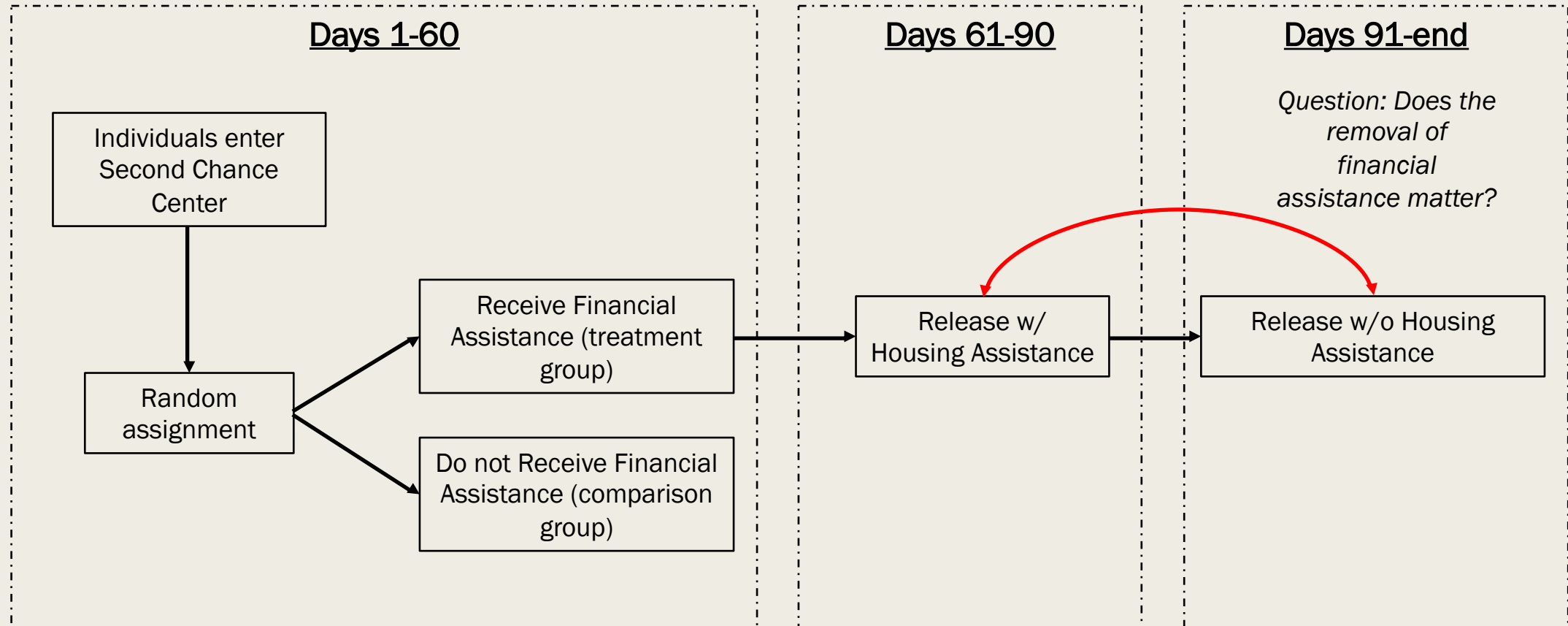
Example of study flow for each cohort



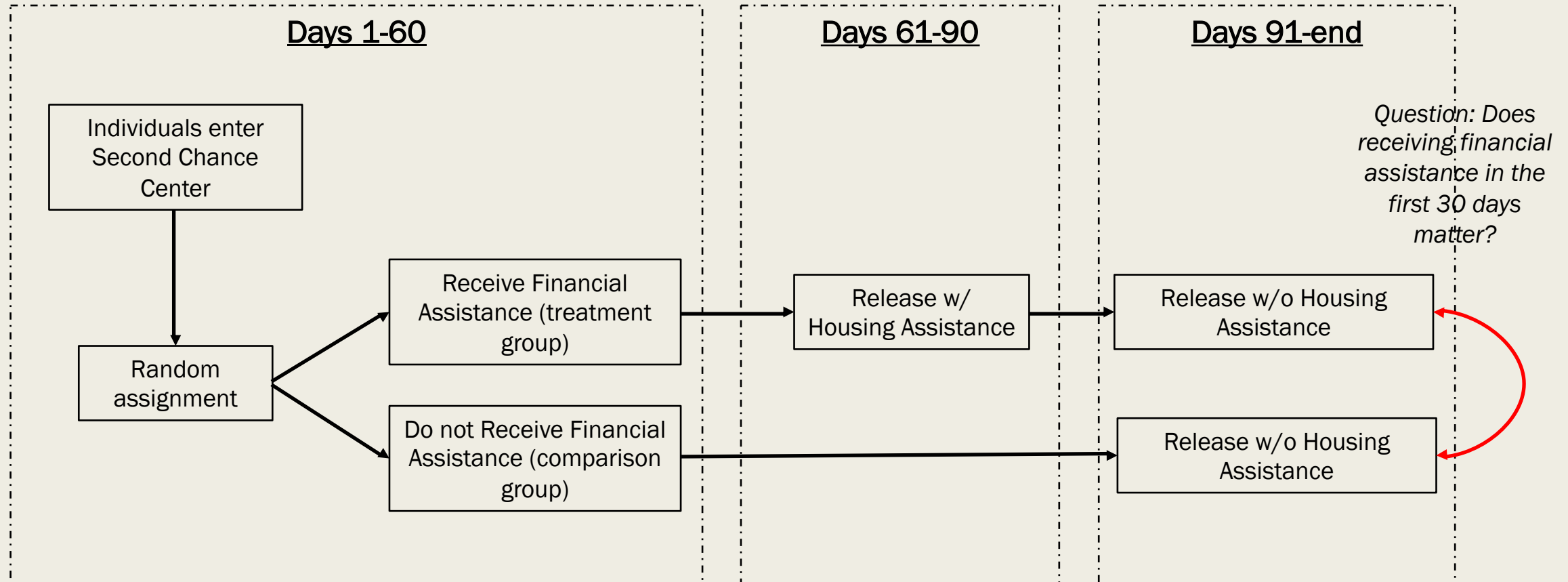
Example of study flow for each cohort



Example of study flow for each cohort



Example of study flow for each cohort



Timeline

- Begin first cohort in September
- Follow each cohort for a minimum of 1 year post release.

THANK YOU!

Jacob T.N. Young
Associate Professor, School of Criminology & Criminal Justice
Associate Director, Center for Correctional Solutions
Watts College of Public Service and Community Solutions
Arizona State University

Jacob.Young.1@asu.edu



Arizona State University